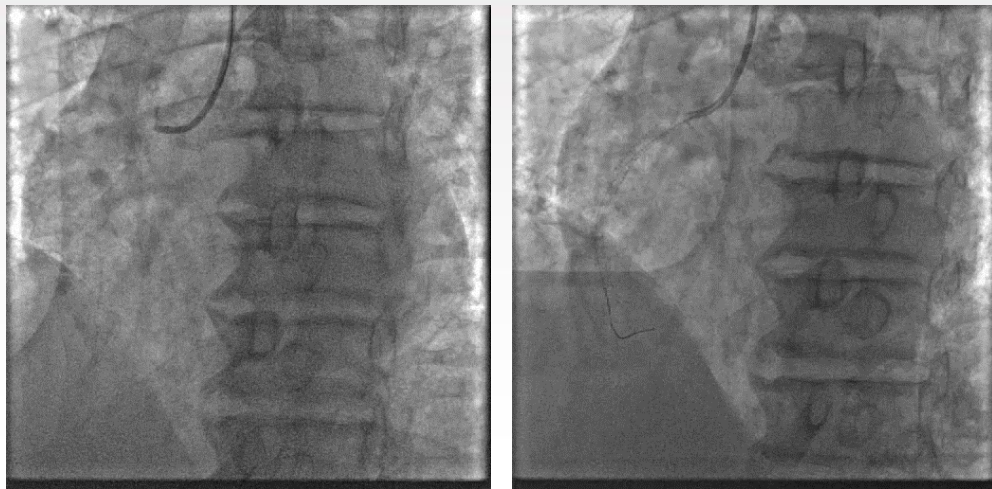


# **COMPLEX and High-Risk PCI: Planned DK crush**

**Shao Liang Chen, MD, FACC  
Nanjing First Hospital, Nanjing Medical University  
Nanjing, China**

## Planned DK crush: Case Introduction

- ▶ Mr. Ma R.J.
- ▶ Male, 74 years
- ▶ Previous smoker
- ▶ Hypertension
- ▶ Renal failure
- ▶ Unstable angina (3-m)
- ▶ LVEF=46%



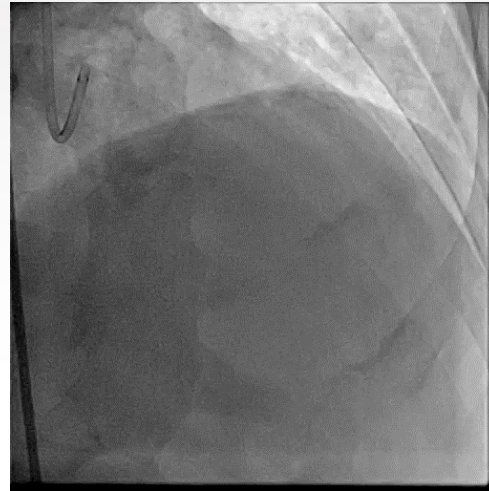
**3.5 x 38 mm SES (polymer biodegradable)  
at 18 atm, POT by 3.5 x 12 mm NC balloon**

# Planned DK crush

## Baseline angiography of left coronary artery



AP caudal



RAO cranial



Spider view

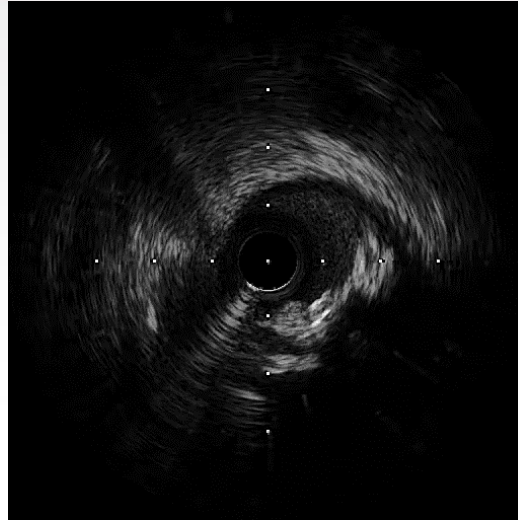
**Trans femoral approach, 6F guiding**

# Planned DK crush

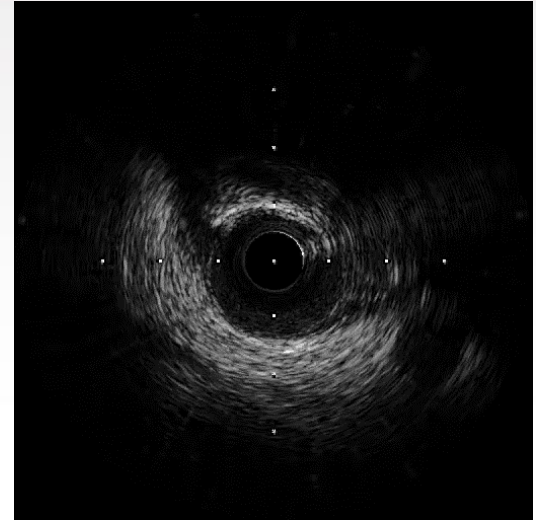
## Lesion preparation and IVUS assessment



3.0 x 15 mm balloon



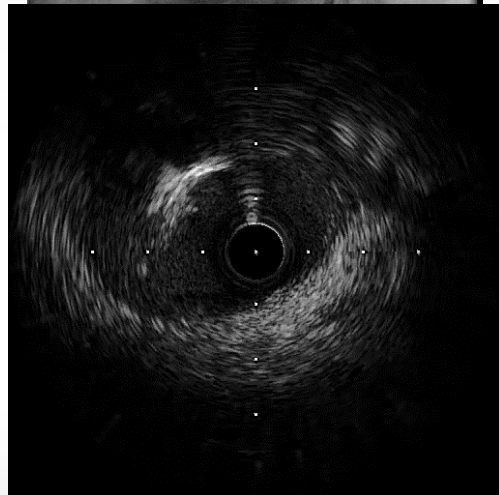
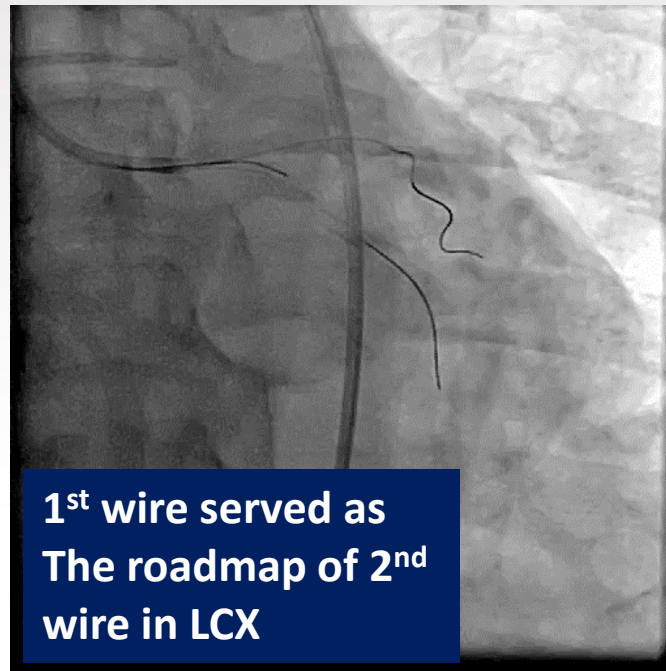
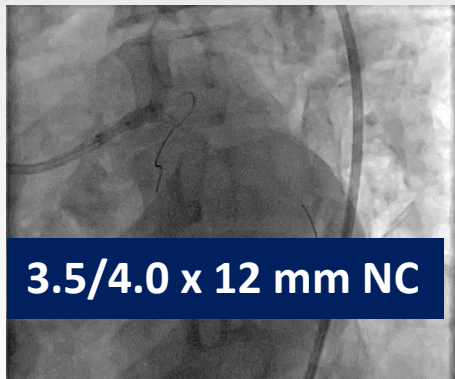
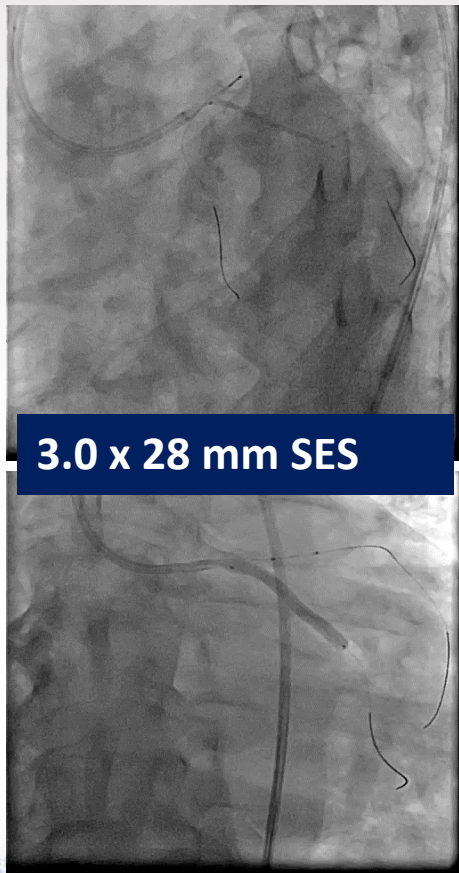
LCX



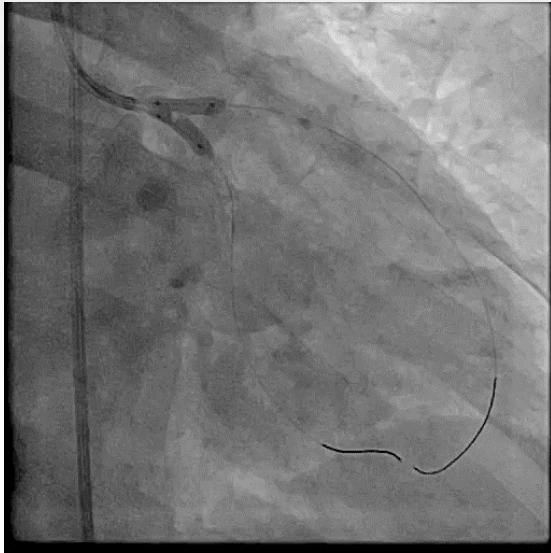
LAD

**2 BMW wires, Ilab-IVUS**

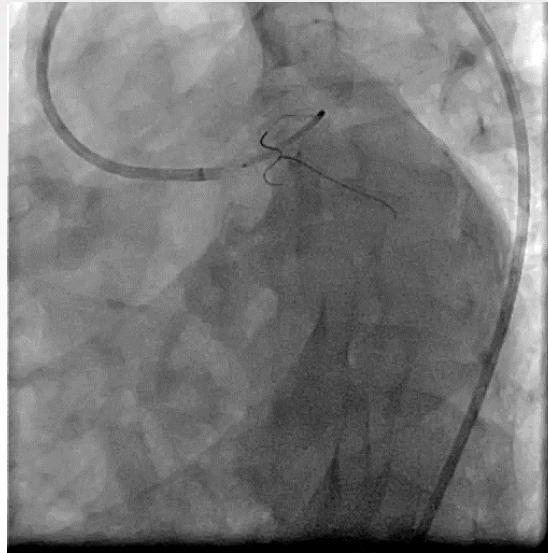
# Planned DK crush : Stenting LCX, balloon crush, rewiring



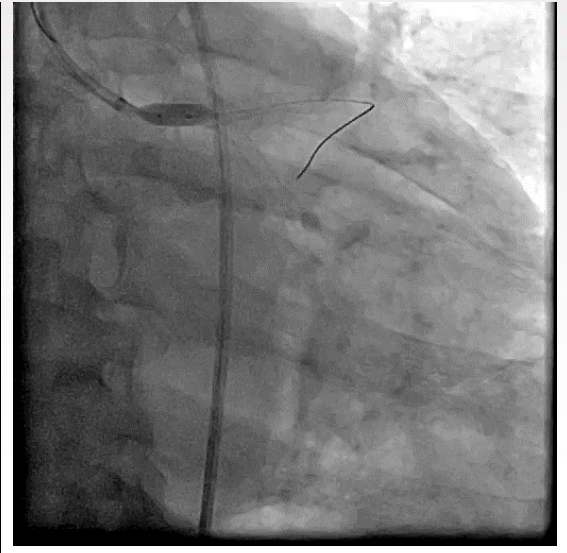
# Planned DK crush : 1<sup>st</sup> kissing, stenting/post-dilating LM



**3.0/3.0-12 mm NCs**

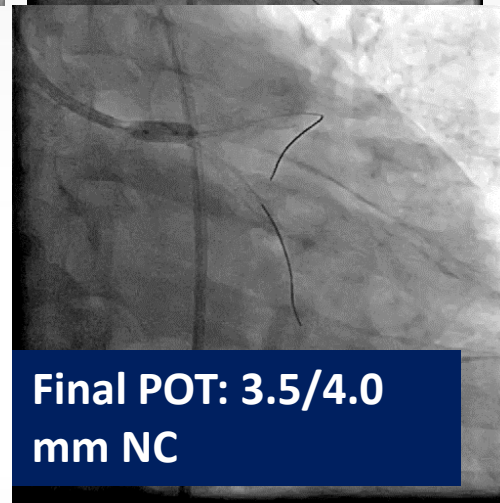
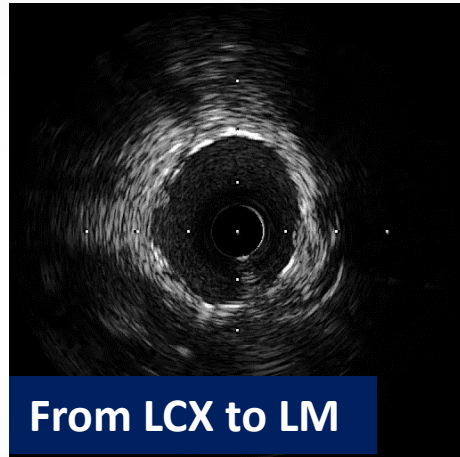
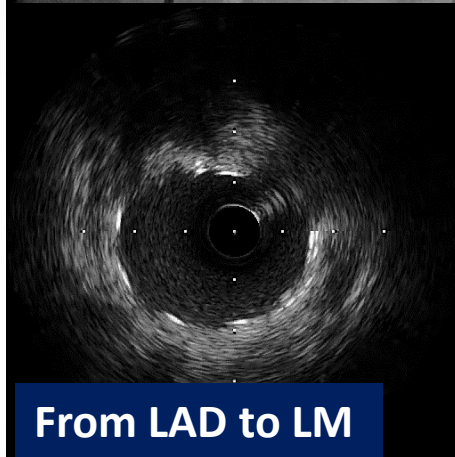
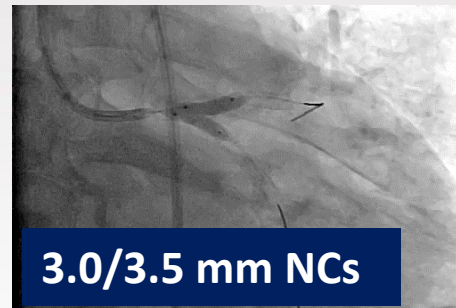
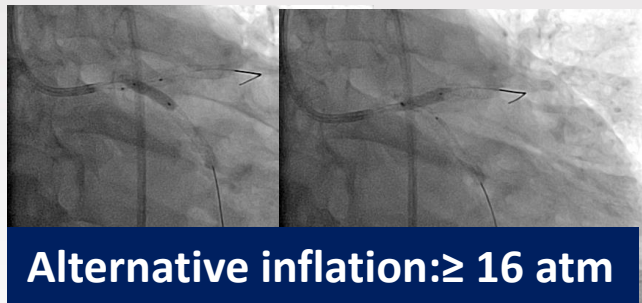
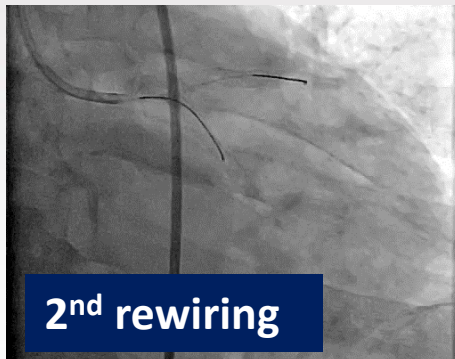


**3.5x 28 mm SES**

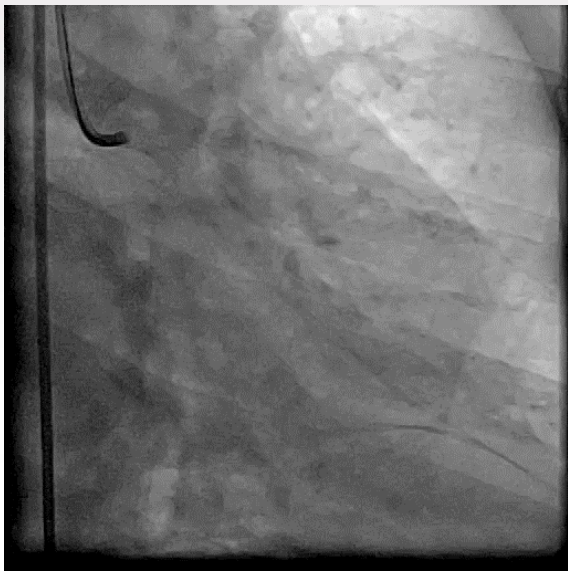


**3.5/4.0 mm NC**

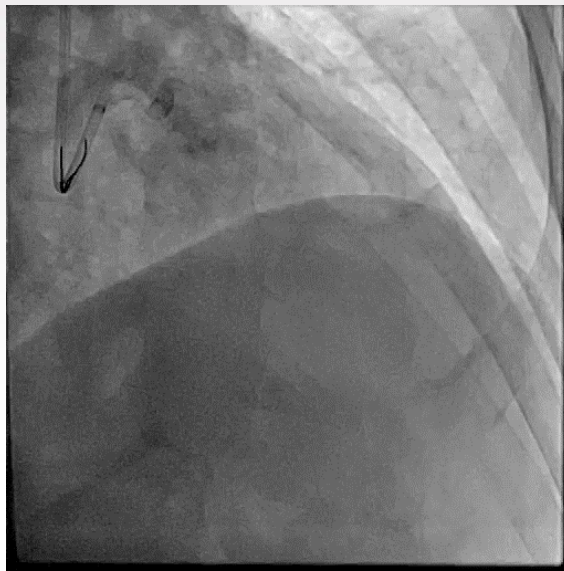
# Planned DK crush : 2<sup>nd</sup> rewiring, 2<sup>nd</sup> kissing



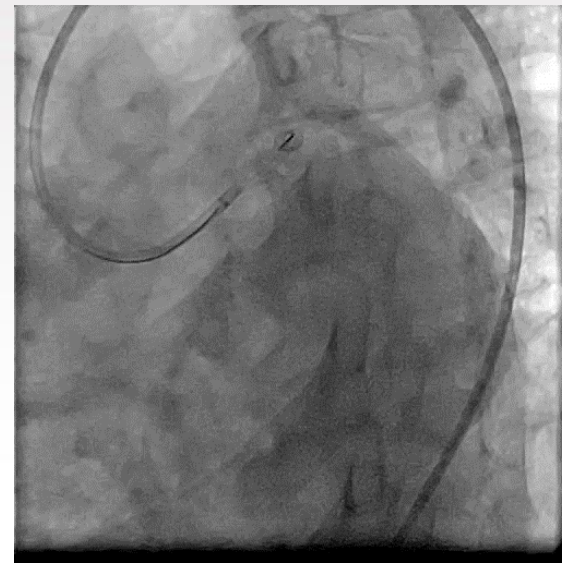
# Planned DK crush : Final angiography



**AP Caudal**



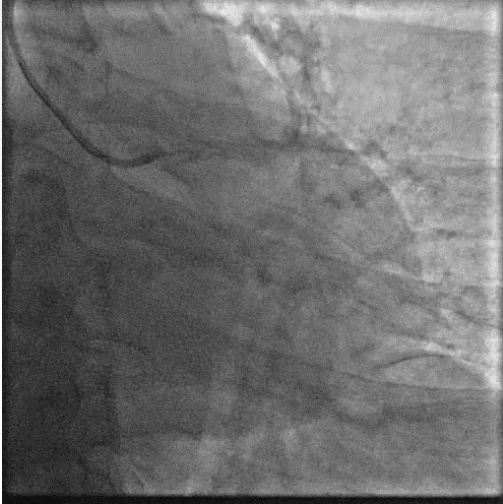
**RAO Cranial**



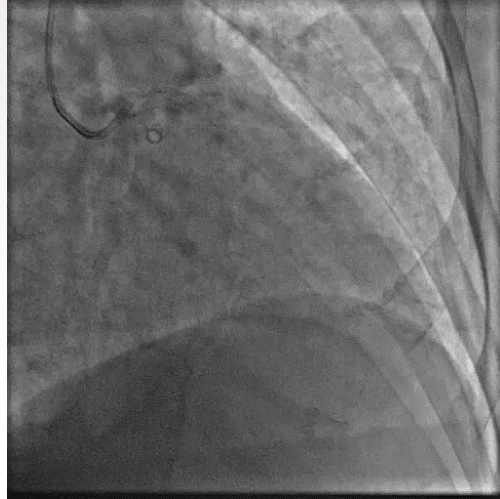
**Spider view**



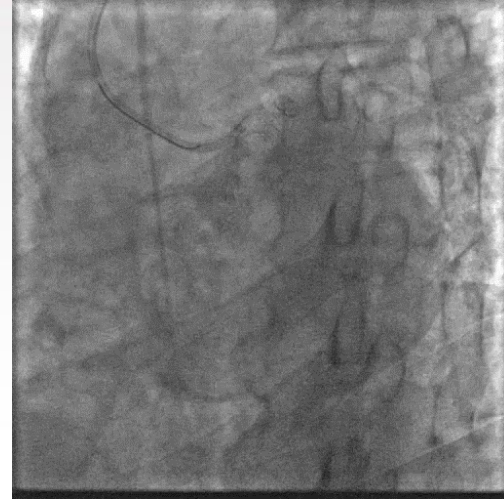
# Planned DK crush : 1-year result



**AP Caudal**



**RAO Cranial**



**Spider view**

**Thanks for your attention!**